

### Benefits

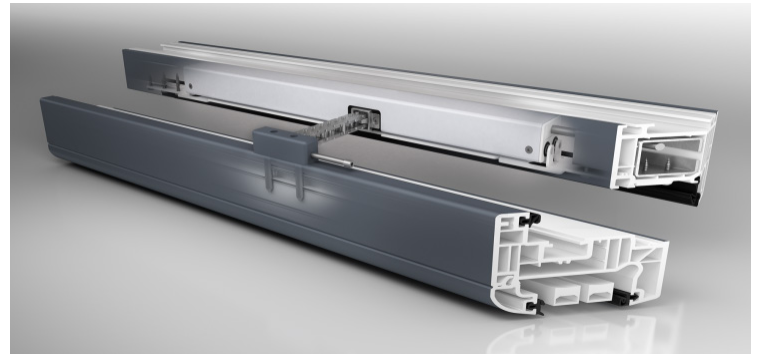
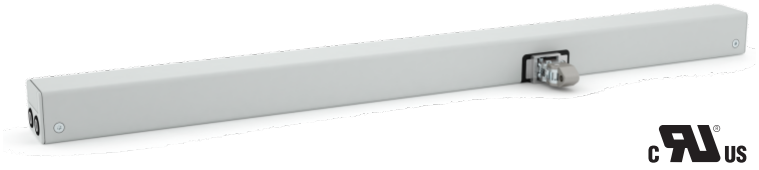
- Ideal for smart buildings; integrate with building and home automation systems.
- Certified for Smoke & Heat Extraction (SHE)

### Applications

Automated operation of awning windows, hopper windows, casement windows, curtain wall vents, and skylights.

### Features

- 24V DC /  $\pm 15\%$
- Push/Pull force: 250N (56 lbf), 1500N Locking Force
- Perfectly suited for profile integrated and surface mounted installation; White (RAL9006) or any custom RAL
- 2.5m connection cable with interconnect plug. Connection available on both ends of the actuator
- TMS+ tandem safety function for operating 2 drives on one sash
- Available as 19.70" (500mm) chain operator
- Programmable drive functions and different drive parameters
- Active closing edge protection (time controlled reversing when an obstacle is detected)
- Mounting: Mounting brackets available for all profiles
- 5-year manufacturer's warranty. Requires reading AFI Install Guide before purchase, and confirmation of project and installation specs by licensed electrical contractor



### Programmable Features

Option of chain stroke programmings via magnet.

- Chain stroke** From 80mm up to 500mm
- Speed adjustment** Programmable from 9.4mm/sec down to 6.7mm/sec for quiet operation
- Speed reduction** For the last seconds of closing, as a safety precaution
- Seal relief adjustment** Between 0-20mm to protect sash at closed position
- Feedback Signal** OPEN or CLOSE can be selected

### CDC 500

Part #	Color	Description	Stroke (and force)
<b>26.100.55</b>	White	Right Type	Up to 500mm (250N)
<b>26.100.60</b>	White	Left Type	Up to 500mm (250N)
<b>26.100.56</b>	White	Right Type	Up to 500mm (250N)
<b>26.100.61</b>	White	Left Type	Up to 500mm (250N)
<b>26.100.00</b>		Custom Build	

## Specifications

<b>Supply Voltage</b>	24VDC (-15% / +50%)
<b>Nom. Current Draw</b>	Approx 0.8A at 250N load
<b>Limit stop</b>	(Open): Built in limit switch (Closed) Integrated electronic power cut-off
<b>Chain stroke (approx)</b>	500mm (19.70")
<b>Push force (Max)</b>	250N (56 lbf +/- 3%)
<b>Pull force (Max)</b>	250N (56 lbf +/- 3%)
<b>Chain speed</b>	6.7mm/sec 13.6mm/sec (SHEV emergency opening)
<b>Dimensions</b>	485mm L x 39mm D x 30mm H (18 <sup>7</sup> / <sub>8</sub> " x 1 <sup>5</sup> / <sub>8</sub> " x 1 <sup>1</sup> / <sub>8</sub> ")
<b>Run/Rest cycle</b>	For every 60 sec running (on), must then rest (off) for 120 sec
<b>Ambient Oper Temp</b>	-10 °C to +60 °C (14 °F to 140 °F)
<b>Listing</b>	UL Recognized
<b>Protection class</b>	IP32
<b>Colors</b>	Powder-coated White (RAL9006)

